

XX
The patrol is on
the bridge deck

ABUT.1

ABUT.2

111.0312

52.5

Shoulder
+ slow lane

Core #1

Core #2

Core #3

Core #4

Pic #24

80°

PVT.#2

15x11

25
x
15

PVT.#1

0 10 20 30 40 50 60 70 80 90 100 110

| | | | | |
|---|--|--|---|---|
| <p>STATE OF TENNESSEE DEPARTMENT OF TRANSPORTATION OFFICE OF BRIDGE INSPECTION AND REPAIR</p> | <p>BRIDGE NO. 19-1440-4.17L BRIDGE FED ID* : 19104400028 CROSSING: LELAND LN</p> | <p>COUNTY: DAVIDSON SCALE : 1:10 SKEW : 80° RT</p> | <p>BRIDGE LENGTH : 111'-0 1/2" BRIDGE WIDTH : 52.5' DATE : 08-11-2017 DRAWN ASHRAF ARMANIOS</p> | <p>P=1 OF 1 LEFT LANE TRAFFIC DIRECTION W.B.L</p> |
|---|--|--|---|---|

Pic # 24
The Patch is
On the Bridge

Standing
Water

Bubble

APP. PUT

4.17.2012
LELAND

Photographs

Bridge ID#: 19104400028

Date: 02/15/2006



A/C B.O.'S - TYP.

4-17 WBL / LEAMAND

2006 REPORT

Photographs

Bridge ID#: 19I04400028

Date: 02/22/2008

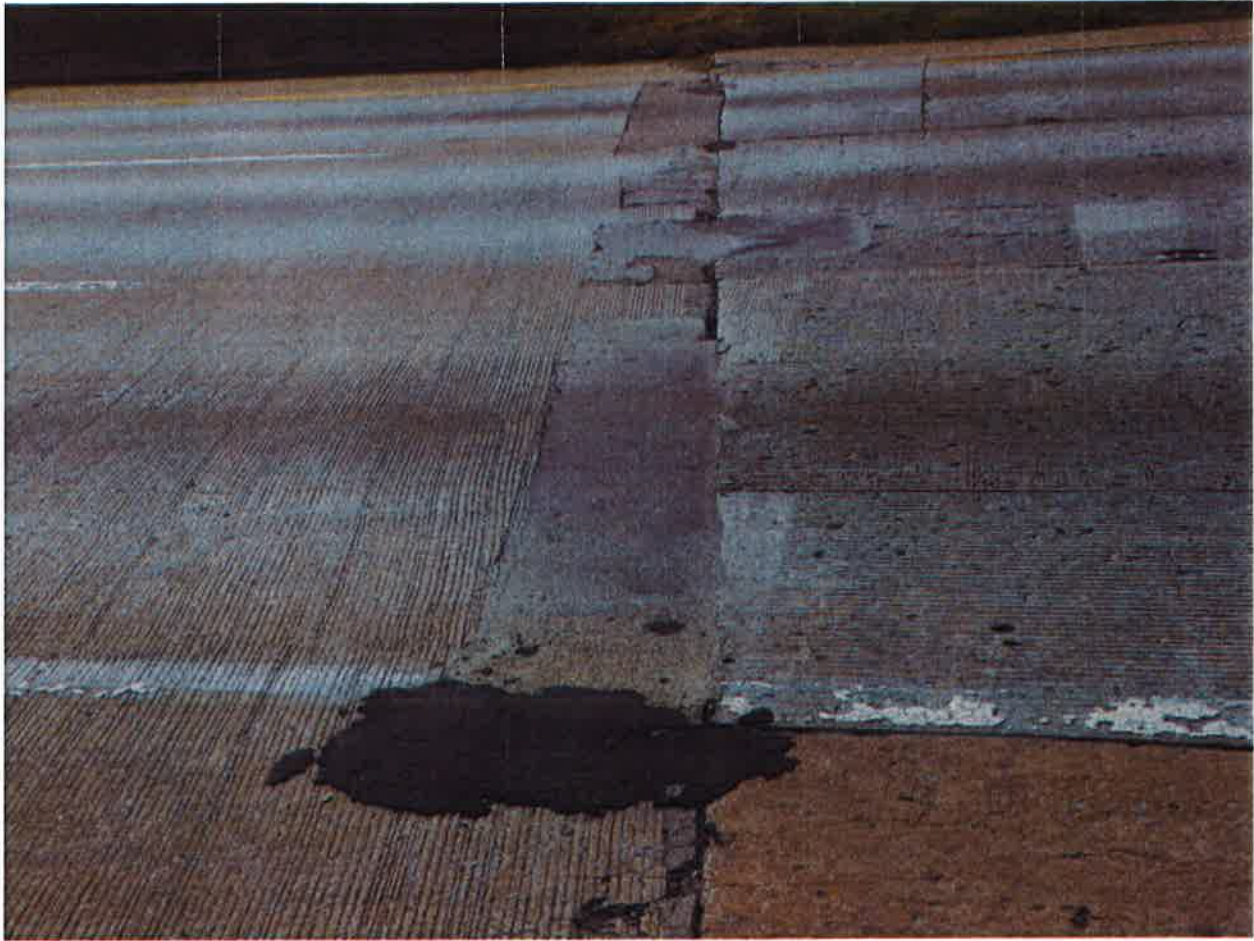


APPROACH #1



BRIDGE NO.

4.17 WPA / LEMLAND
2008 REPORT



Pic # 25 Patches on Approach Pavement 1

Bridge No. 19-I440-4.17L